



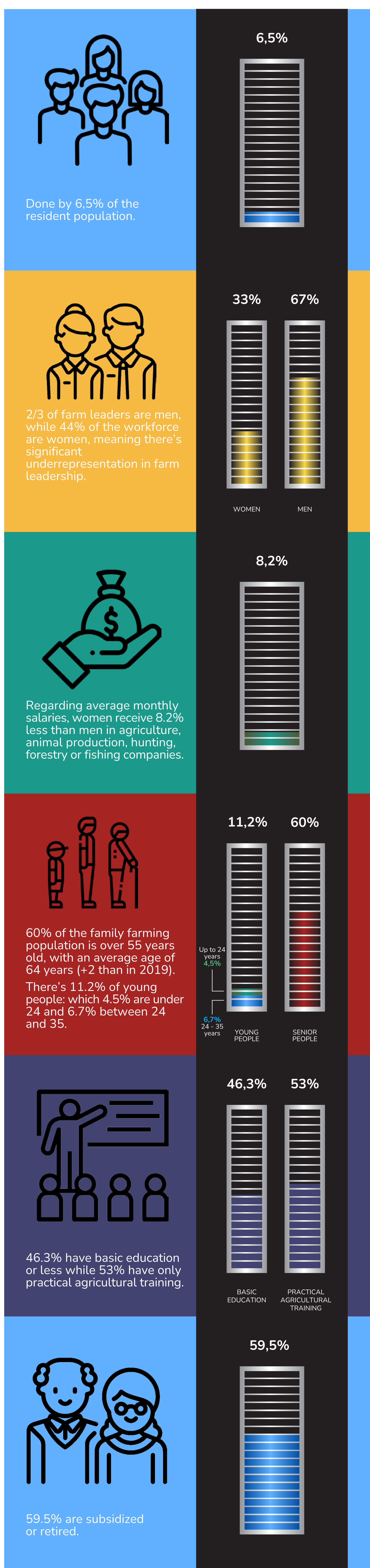
PADAF

ACTION PLAN FOR THE DECADE OF FAMILY FARMING IN PORTUGAL 2028

Family Farming (FF): relates to all food production of vegetal and animal source, from farmlands and forests, from rivers and seas, including other habitats, that have direct influence of forest and animal producers, fisherman, extractivists, among others, and which is done mainly through family member's labour.

Find more information about FF's contributions to the promotion of sustainable food systems and diets in Portugal here

SOME DATA ABOUT FAMILY FARMING IN PORTUGAL



Current problems/needs of Family Farming in Portugal

- The subsector of food production has been systematically discriminated in terms of creating policies to access resources and support services;
- Non-generational renewal;
- Abandonment of territories (wildfires, environmental instability, isolation);
- Aging of farmers and low levels of education/training;
- Difficulty in accessing global markets and lack of local markets;
- Invisibility and lack of value of women farmers;
- Non-recognition and non-appreciation of the social, cultural, and environmental functions that flow from Family Farming.

Building an Action Plan for the Decade of Family Farming in Portugal (PADAF)

Through participatory activities with farmers, specialists, technicians and other relevant actors/organizations, aiming to articulate efforts on promotion and valorisation of FF.



Current challenges of Family Farming in Portugal

- Strengthen the legal, political and institutional framework;
- Rescue the heritage associated with family farming products;
- Manage and generate knowledge;
- Strengthen and promote differentiated markets;
- Consolidate capacities and opportunities for vulnerable groups;
- Promote gender equality, equity and social inclusion;
- Reinforce collective and organizational structures;
- Increase incomes.

See the identified challenges in detail

PADAF — VISION for Family Farming in Portugal

By 2028, family farming in Portugal will be institutionally fortified and linked to markets, in which sustainable and egalitarian territorial food systems thrive, promoting integral development of families and communities.

Expected results to be achieved with PADAF

- Strengthened FF regulatory and political-institutional frameworks;
- Promotion of sustainable territorial food systems;
- Strengthened FF market participation (local, national and international), with differentiated products and foods with nutritional, social and cultural value;
- Strengthened FF expertise, contributing to the rescue and respect of local and traditional knowledge;
- Enhanced economic inclusion of women and young people through innovative income-generating actions; training in new tools and technologies; transforming FF;
- Dignified life for people who dedicate themselves to FF, through economic and social development actions that offer possibilities of accessing social protection at all stages of life.

See the detailed tables of actions and expected results at



Portuguese contribution to UNDF's Global Plan according to the 7 Pillars and Strategic Interventions.



The management, communication, evaluation and monitoring of PADAF will be guaranteed by a Working Group/Standing Committee, formed by representatives of Government (including local) Administration entities, representatives of family farmers and civil society organizations.

PROJECT IMPLEMENTED BY



PROJECT FINANCED BY

